


Oboe Fingerings


Keyboard Visualization

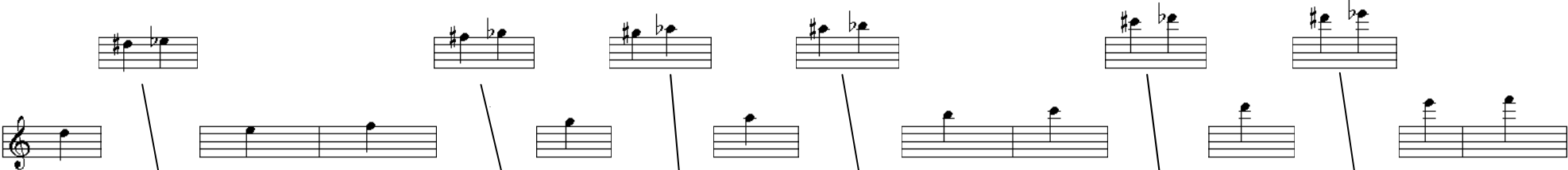
When multiple fingerings are listed, the fingering on the bottom is most common.

The chart displays fingerings for the following notes: A# Bb, B, C, C# Db, D, D# Eb, E, F, F# Gb, G, G# Ab, A, A# Bb, B, C, C# Db. Shaded boxes indicate notes with multiple fingerings: A# Bb, C# Db, D# Eb, F# Gb, G# Ab, A# Bb, and C# Db.

 FLAT SIGN Go down one half step (or one key)

 NATURAL SIGN Cancels any flat or sharp



 SHARP SIGN Go up one half step (or one key)



D	D# Eb	E	F	F# Gb	G	G# Ab	A	A# Bb	B	C	C# Db	D	D# Eb	E	F

 **FLAT SIGN** Go down one half step (or one key)
  **NATURAL SIGN** Cancels any flat or sharp
  **SHARP SIGN** Go up one half step (or one key)

8va

 FLAT SIGN Go down one half step (or one key)
  NATURAL SIGN Cancels any flat or sharp
  SHARP SIGN Go up one half step (or one key)

