

Luther High School

Frequently Asked Questions



Whom do I contact, if I have a question?



Admissions / Tuition / Housing / Attendance

Principal Paul Wichmann

Transportation - Assistant Principal Keith Heinze

Transfer Credits / Curriculum- Assistant Principal James Mahnke

Athletics - Athletic Director Joel Babinec

Music - Music Dept. Chairman Jim Rupprecht

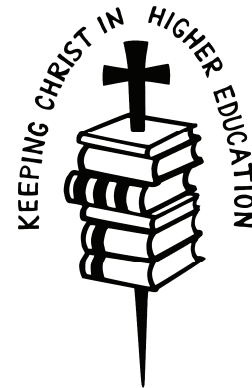
What is the biggest change from elementary school to high school?



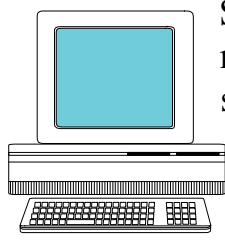
Time management often emerges as one of the biggest adjustments to high school. Students may only have time to begin an assignment during a class period and therefore need to budget their study time. Letting work go until a study hall just before a class period is not advisable.

When is chapel?

On Mondays, Wednesdays and Fridays students meet in Commons after second hour for chapel. On Mondays one of the Pastors from our association congregations conducts chapel. On Wednesdays and Fridays one of the male instructors conducts our chapel worship. On Tuesdays and Thursdays students have a homeroom devotion with their academic counselor.



What is "Skyward"?



Skyward is a computerized student records system. By means of your personal password you can access your students' academic, attendance, discipline and other student information. Each student's records are password protected. You can access Skyward through the Luther High School web site at www.luther.k12.wi.us.

How many report cards are issued? Eight academic reports are sent home each school year. Only the semester report cards become a part of each student's permanent record. The other reports are academic updates or grades in progress. Each report affords an opportunity to reflect on stewardship of time and talents.



What is Luther High School's policy regarding absences?

After a student has accumulated 6 absences in a course during a semester the administration reserves the right to disallow the student's participation in school-sponsored activities. Credit for a semester course will be withheld if student is absent 12 or more times in a course during a semester, unless there are extenuating circumstances.



How can you find out how many times your son / daughter has been absent from a particular class?



Parents may review their student's attendance record either on-line by means of Skyward or by referring to the attendance report on the progress reports.

What is the "Planner"?

The Planner is a detailed listing of Luther High School activities. Usually there are six weeks' activities listed on each Planner. Knowing when practices, games, activities and special events are scheduled helps keep track of busy schedules. Many have found having a copy of the Planner at school and another one at home is very helpful. Copies of the Planner are available on the table in the office and at Luther's web site.



What is the sign-out / sign-in sheet?

If it is necessary for a student to leave during the school day for an appointment or due to illness, the student must "sign out" in the office before leaving school. Upon the student's return, whether later the same day or the next day they return to school, the student must "sign in" before going to class.



When are detentions served?



Students and parents are provided written notice of a detention two weeks prior to the assigned detention time to allow notification of parents for transportation purposes and /or other persons to which the student has a responsibility. Detention will be served before participation in any extra-curricular activity also scheduled for the designated detention time. Detention is held according to the schedule on the Planner, but it is generally every Wednesday from 3:00-4:00 PM.

What is Luther's dress code?

A student's dress should reflect a quality educational environment and a statement consistent with our Christian faith. Some examples of inappropriate school attire are listed in the Parent / Student Handbook under the heading "Appearance." If you are in doubt, ask first before you wear it to school.



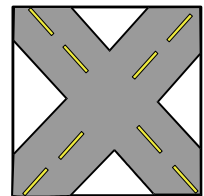
What is the lunch program like?

Each day students have a choice from several entrees. The monthly menu is mailed home at the beginning of each month and is also available on Luther's web site. This same menu is posted on a bulletin board near the office and in the Commons, where our student body eats. Each day approximately 200 people take hot lunch. Tickets can be purchased in advance or on a daily basis. As we are part of the federal hot lunch program, reduced and free lunches are available to those who qualify. If you have any other questions about the hot lunch program, contact Mr. Keith Heinze (608) 783-5435 extension 109.

*Bon
Appétit!*

Where is the "crossroads"?

The "crossroads" is the intersection of the two hallways just outside the main office. Short meetings or announcements of various groups may take place at the crossroads.



When is the tuition payment due?

Luther High School utilizes the FACTS Tuition Payment Plan.

Families are able to pay their tuition in one of three (3) ways:



1. Payment in full – This payment is made directly to the school due on or before September 1st.
There is a 5% discount for full tuition payment by September 1st.
2. Payment by the semester - There is a 3% discount for payment of one semester in advance.
3. Monthly payments through FACTS – over a period of 10, 11, or 12 months. These payments are made through FACTS and there is a \$38 fee per family, per year for this payment option.
(Tuition accounts paid by the semester will also make these payments through FACTS, but the fee is only \$15 per family.)

Will students have an opportunity to test out of any classes?

Students may test out of keyboarding and Algebra I. In place of keyboarding students will have a study hall. Students who test out of Algebra I will have an opportunity to take Geometry.



Can students drop and add classes?



Any change in a student's schedule, which affects his course load, should involve the student, parents/guardians, counselor, and any instructor(s) affected. Students must follow the drop/add procedure.

1. First, obtain a drop / add form from your counselor.
2. Students may not attend a new class or drop a current class until the drop / add procedure has been completed and the student has been issued a new schedule.
3. Dropping and adding classes must be done before ten class days have elapsed.
4. If a student desires to drop an overload course without adding another, this must be done prior to the semester exam.
5. Changing the level of courses (“advanced” to “general” OR “general” to “foundations”) may be done anytime the student, parents / guardians, counselor and instructor(s) determine this change is in the best interest of the student.

How can I find out if a scheduled activity has been canceled?

The school's phone system allows you to select an option, which lists any cancellations. Dial the school at (608) 783-5435 and press 1 at any time to hear the current cancellations.



How do students register for driver's education?



Each semester driver's education is offered at Luther High School. The program runs on designated Saturday mornings. Students register for this program by signing up in the office during announced times.

WWTC also offers driver's education at various times throughout the year. For more information about WWTC's program call (608)785-9177.

What organizations assist Luther High School?

- **Friends of Luther** – Membership is open to communicant members of the Luther High School Association. Friends of Luther does many projects for Luther High School including an ongoing aluminum can drive, maintaining the Rotary Christmas lights at Riverside Park, running concessions at events, and sponsoring the Dr. Raabe Golf Tournament.
- **Alumni Association** – The Alumni Association provides active support to Luther High School through proceeds from dues and the Alumni Basketball Tournament.
- **Good Steward Store** – This resale store is located on Rose St. in LaCrosse, just south of I-90 and Hwy 35. Items for donation may be dropped off any time the store is open. Volunteers are always needed and welcome. For more information call (608) 779-9763.
- **Music Associates** – This organization provides assistance with the various activities and projects of the Luther High School Music Dept.
- **Luther High School Auxiliary** – Membership is open to all adults of the Luther High School Association congregations. Each year the Auxiliary purchases numerous non-budgeted items. All activities are funded through voluntary contributions.

Where can parents learn more about Luther High School?



Visit Luther's web site at www.luther.k12.wi.us, call Luther High School at (608) 783-5435, or e-mail us at office@luther.k12.wi.us