

Newsletter for...

Friends of Luther

Spring 2011 Edition

Whoever is thirsty, let
him take the free gift
of the water of life.

Revelation 22:17

association center UPDATE...

In its May 14, 1997 meeting, the Luther High School Conference of Delegates authorized the building of the Association Center, which consists of three phases: a gymnasium, a chapel/auditorium and three classrooms.

The dedication of the new gymnasium on August 20, 1999 marked with thanksgiving the completion of the first phase of the Association Center. What has happened since 1997?

The present facility is being well utilized. The beautiful Association Center Gymnasium has become a focal point for all large gatherings (concerts, opening service, graduation and various sport practices and games). The need and benefit of moving forward with phases 2 and 3 of the Association Center project is becoming more evident. To install the lighting and sound systems for the concerts, worship services and graduation requires hours of preparation and takedown. Each day that the student body has chapel, chairs in the Commons must be arranged and removed. The chapel/auditorium would be well suited and ready for such uses. The addition of Home Maintenance electives, expansion of the art program and recent technology electives underscore the need for more adequate classroom space. Additional space will allow Luther to be able to better serve the cur-

by: Paul Wichmann - Principal

rent class enrollment, will allow more students to enroll in those classes and enable us to expand the curriculum and course offerings.

Has the time come to move forward with the next phases of the Association Center project? Current available funding for the next phases is over \$403,000.

Recently an anonymous donor has indicated that Luther High will receive a gift of one million dollars. The donors prefer that this gift be used for capital improvement projects. The donors supported the consideration that this gift may be utilized as a matching gift opportunity for the Luther High Association. With grateful hearts we acknowledge the donors for this generous gift and also express our gratitude to God for this blessing.

At their February 9, 2011 meeting, the Conference of Delegates endorsed the idea of securing current cost estimates and updating the 1997 building plans. The Board of Control will prayerfully begin moving forward with the necessary financial and facility planning.

We ask you to prayerfully consider the opportunity to help with the unfinished portions of the Association Center and pray that all be done to honor and glorify God.

shop with **SCRIP**

by: Marion Radichel - Administrative Assistant

If you are not participating in the Scrip program, now would be an excellent time to begin. The Scrip program is a great way to help with tuition at Luther High. By simply planning ahead on everyday purchases like groceries, gas, restaurants, clothes, entertainment and home repair, the average family can earn about \$11 a week. That modest number adds up quickly - over \$500 a year for an average family! Signing up is easy and can be done right away. There is no minimum or maximum

order, no contracts, no fees and no commitment. The Scrip program has added several new vendors. La Crosse Family Restaurant is offering a 15% discount, U-Bake is offering a 5% discount, Starbucks is offering a 7% discount and Toys R Us is offering a 1.5% discount. Scrip cards are available in the office from 8:00 a.m. until 3:30 p.m. on all student contact days. Summer hours are every Wednesday morning from 8:00 until noon.

AUXILIARY news

by Pattie Spoo - Auxiliary President

The Luther High Auxiliary remains active. The group is looking forward to hearing from two 2010 Luther graduates that spent time teaching Vacation Bible School in Ukraine last summer. Megan Lepke and Krista Komay plan to speak at the April 7th meeting (7:00 p.m.). They traveled to the Ukraine with another classmate, Tracy Traxler, and Pastor and Mrs. Bader last June. They will speak about the culture of the Ukraine and events from their trip. It inspires all of us to "hold up the prophet's hand" in any way we can.

The Auxiliary is always looking for new members. We will be electing officers at the April meeting. The Auxiliary is open to all Luther High current and past students and their families as well as members of the Luther High School Association Congregations.

In May the Auxiliary salutes student achievement. Performers from the Wisconsin State Music Association competition will be performing and we will hear from Luther's Korean exchange student. Join us as we celebrate the gifts the Lord has given these students on May 5th at 7:00 p.m.

Luther High Auxiliary

PARENTS

SUPPORTERS

FRIENDS

NOTES from Pastor Sachs...

In 2010 God made it possible for the Good Steward Resale Shop to provide \$252,010 in financial support to Luther High School. We thank the Lord for His help. We also thank all of the volunteers who work at Good Steward. The annual appreciation dinner for Good Steward volunteers will be held at Luther on May 2. We hope to see many of you there. Good Steward is in need of your donations of good used merchandise. We can use clothing, housewares, jewelry, linens, books, greeting cards and collectibles. If you are thinking of doing your spring cleaning, your donations would be greatly appreciated! Donation drop-off hours are:

Mondays - 7:30 a.m. - 2 p.m.

Tuesdays-Fridays - 7:30 a.m. - 5 p.m.

Saturdays - 9 a.m. - 5 p.m.

Good Steward is also happy to have new volunteer workers. Just stop in or call to talk to a store coordinator. Your volunteer work at Good Steward is a good way to carry out the Biblical exhortation, "Serve one another in love" (Galatians 5:13).

We would also like to remind everyone of Good Steward's matching gift program. If you make a gift to Luther High's general fund, just indicate that you would like to have your gift matched by Good Steward. It is that easy to double your donation.

God's grace enabled Friends of Luther to provide the following financial support for Luther High School in 2010:

Drama Club \$800

Sound Foundation \$1,000

Golf Team \$1,400

Track \$4,140

Football Team \$920

Tuition Aid \$13,675

Recruitment (T-shirts) \$382

Yearbook \$100

Music Department \$210

Christmas Gift \$3,960

Ministry of Christian Giving \$2,600

Total = \$29,187

We thank God for His help and many blessings. Thanks also to all friends of Luther who helped during the past year. As we go forward into 2011, we pray that the Lord will enable us to complete the task of renovating the track at Luther. The members of the Friends of Luther Coordinating Committee are Steve Wrobel, Ralph Mann, Linda Schomberg, Pat McGuire, Sue Schams, Suzanne Ekhoft, Kay Zibrowski and Pastor Sachs. Please contact any of them if you would like to help or if you have any questions.

God's channels of...

by Paul Wichmann - Principal

BLESSINGS

"Praise God from whom all blessings flow." This expression of thanks and praise rightly acknowledges the ultimate source of every blessing Luther High School receives.

Among those blessings is financial support. With a projected 2011-12 budget of nearly two million dollars all sources of income are vital components. The channels through which these financial blessings come to Luther High School are varied and include:

- Congregational Support (20.1%) - There are 28 congregations in the Luther High School Association.
- Tuition Income & Grants (71.4%) - Every Luther High student receives grants from Luther High School (\$325), the Student Tuition Endowment Fund (\$60), The Good Steward Store (\$175) and Friends of Luther (\$60).
- The Good Steward Matching Gift Program (4.3%) - The Good Steward Store matches gifts to the general fund up to \$80,000.
- Other Gifts and Bequests (3.4%) - This includes

memorials directed to Luther High School

- Direct Regular Contributors Funds (DRCF) (.8%) - Individuals provide financial support directly to Luther High School. Your monthly gift can be directed to any specific fund or department. This provides you with a direct channel of giving in support of the Student Tuition Endowment Fund, the building fund or another area of interest.

Currently there are three easy ways to contribute to this fund:

1. by means of monthly envelopes available from the school office
2. utilize Thrivent's Simply Giving, a direct deposit program which has no additional service charge
3. contribute online at Luther's website

Your prayers, active interest, involvement and financial support of Luther High School are all channels of God's blessings for which we express our gratitude to you and thanksgiving to God.

luther class of 1976

by Connie (Scheck) Forseth - Class of 1976

Can you believe that we, the graduates of the Luther High School Class of 1976 will be holding our 35 Year Class Reunion this summer? The dates for the upcoming reunion are July 8 and 9, 2011. More information will be mailed/emailed to the class in the near future. Furthermore, we would like to cordially invite all members of the association to an Alumni Sunday on July 10th at First Ev. Lutheran Church in La Crosse.

Our classmate, Mark DeGarmeaux (ELS), will be delivering the sermon. We are also organizing a Luther High Alumni Choir to sing in both worship services on that Sunday. Thus far, we have unanimously decided to sing "God's Son". More details will be coming... watch your church bulletins for additional information or email me at crforseth@gmail.com.

upcoming EVENTS at luther

04/01 The Big Knight

04/24 Happy Easter!

5/14 Knight Revue

5/20 Jr./Sr. Banquet

04/19 Easter Concert

5/13 Awards Night

5/15 Spring Spotlight

5/29 Graduation

Zion Lutheran Hokah, MN...

Zion Evangelical Lutheran Church in Hokah, Minnesota (about 6 miles south of La Crescent), was organized on Oct. 7, 1872. The church was under the pastoral leadership of Rev. Reitz, who was also serving the Lutheran church in Brownsville. Zion was served by the pastors of neighboring congregations for many years. First Pastor Ed Werner of Union, then Pastor John Jahn of Brownsville, followed by Pastors Kopelke, Gutknecht and Volkert from Union (between Hokah and Caledonia). In 1888 the congregation turned to the Evangelical church of Brownsville for pastoral leadership. Only a small group, ten members in all, remained faithful to the true Christian faith as taught in the Lutheran Confessions. That small remnant was served by Pastors Robert Heidmann of Union and John Siegler of Caledonia. On a comical side note, both churches continued to use the name Zion, which caused some confusion over the years, including a funeral director who went to the wrong church! Fifteen minutes before the funeral was to start, the hearse still had not arrived at the correct church. For those who are wondering – I guess it is possible to be late for your own funeral!

In 1900, Zion joined with Immanuel of Southridge

by: Pastor Steven Wall
Immanuel Evangelical Lutheran Church, La Crescent, MN
Zion Evangelical Lutheran Church, Hokah, MN

and the two churches were served for a year by Pastor R. Fehlau. Soon after, Emanuel Lutheran church in Brownsville joined with Zion and Immanuel to form a triple parish. In 1901, Pastor F. Wiechmann was called to serve Zion and Immanuel.

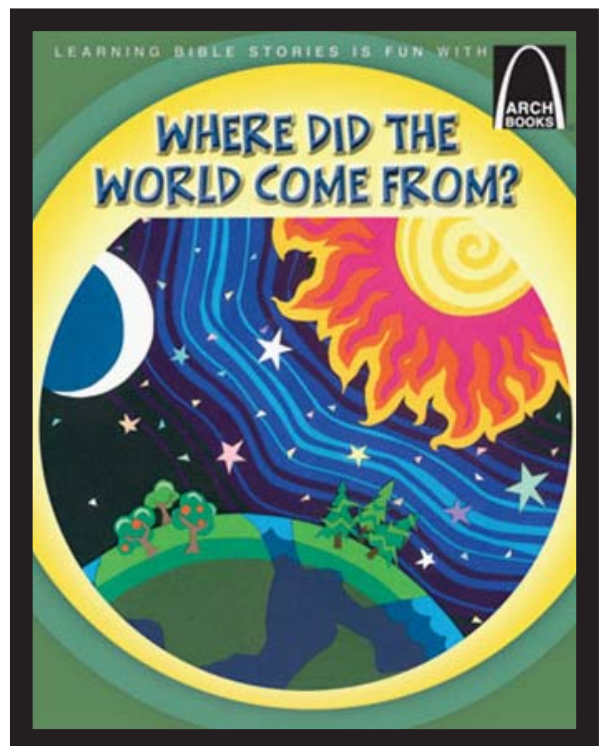
In 1916, Pastor Wiechmann accepted a call to Potsdam, MN. He was replaced by Rev. E. G. Hertler, and thus began the Hertler Era. Rev. Hertler would serve Zion for nearly 60 years. During that time the congregation grew and in 1925 Zion was able to purchase land and build a church of their own. The church was dedicated the Sunday after Christmas Eve – though the temperature outside was a frigid -35 degrees, the members inside were warm and joyful.

On April 22, 1974, Rev. Hertler passed away. Since then Zion and Immanuel have been served by James Ruppel (1975-80), Eugene Roecker (1981-91), Ross Stelljes (1991-95), Daniel Borgwardt (1995-2004) and Steven Wall (2004-present). For more than 100 years, Zion has continued its dual-parish partnership with Immanuel of Southridge (La Crescent). For the past 140 years God has richly blessed Zion of Hokah. To him be all glory and honor and praise! Amen!

an author among us... KARYN LUKASEK

by: Connie Bader - Art teacher

Karyn (Lusky) Lukasek (class of '05) has written and illustrated a children's book published by Concordia Publishing House (St. Louis, MO). *Where Did The World Come From?* is part of the Arch Book series and tells the story of Creation through colorful illustrations and rhyming verse. Karyn is a 2009 graduate from Bethany Lutheran College in Mankato, MN with a major in studio art. The illustrations in her book are made from pieces of cut paper glued together in many layers. This series of seven intricate cuttings was a part of her senior art show and was purchased by Bethany. The original cuttings hang in Honsey Hall on Bethany's campus. Three of Karyn's oil paintings are displayed at Luther High School in the commons and in the Ace lobby. Karyn has also illustrated two other books, *We Saw the Elephant: Overland Diaries From the Lander Trail* and *Store Per: Norwegian-American "Paul Bunyan" of the Prairie*. Karyn, her husband Mike (class of '05) and infant son Isaac live in Northfield, MN where Mike is employed by Kwik Trip. Karyn is very thankful for the opportunity to use her artistic talents to tell the story of God's love.



WINTER SPORTS recap



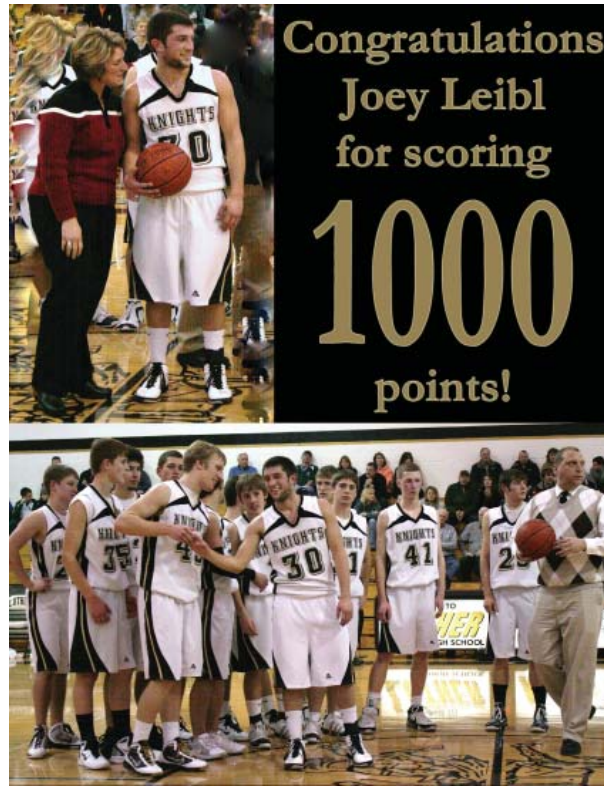
For the second consecutive season, the **Luther wrestling team** crowned a WIAA regional champion. Senior Mitchel Larson won the 135

pound weight class with victories over wrestlers from Cashton and Aquinas. Senior Travis McDonald placed 2nd at regionals in the 189 pound weight class. Both wrestlers advanced to the sectional meet, but were unable to advance in the tournament. Larson finished the season with an overall record of 31-8, while McDonald finished his senior season at 29-12. Luther wrestling competed as members of the Dairyland Conference this season, finishing 3rd with a 2-2 record. Individually, Senior Mitchel Larson and Freshman Kelby Paus landed 1st Team All-Conference honors with 3-1 and 3-0 records respectively. The Knights overall record for the 2010-11 season was 4-5.

Luther Knight Basketball finished their season at 9-14 overall (2-10 in conference). They defended their Luther Knight Christmas Classic Title, winning it for the 2nd consecutive season. Senior Joey Leibl and Sophomore Christian Kennedy were selected to the All-Tournament team. The Knights were led all season long by senior Joey Leibl who reached the 1000 point plateau on February 14 against La Crescent. He joins four other players to reach this plateau: John Urbanek, John Wittmershaus, Rick Gates and Don Larson. Leibl finishes his career at Luther with 1,274 points, placing him at #3 behind John Urbanek (1,409) and John Wittmershaus (1,392). In WIAA playoffs, the Knights opened with a convincing 65-41

win over New Lisbon before falling to conference rival Westby in the regional semi-final game 56-64. The JV team finished its season with a 14-5 (overall) and 8-4 (conference) record. The C-Team completed its year at 16-4 (overall) and 11-1 (conference).

Luther Lady Knight Basketball saw a number of “records” and plateaus reached this season. Luther’s opening season victory over Bangor gave Coach Babinec 200 wins as Luther’s Girls Varsity Coach. On February 4, the Lady Knights victory over Viroqua was the 400th win for Luther’s Girls program. Individually, Senior Jessie Kish set program records of: Most 3 point baskets made in a game (5 vs. Mauston – previously 4 held by Jalena Benrud, Leann Swogger, Courtney Hoeg and Leslie Klinski), Most rebounds in a single game (17 vs. G-E-T – previously 16 held by Jennie Mueller) and tied the record for most assists in a single game (10 vs. Blair-Taylor – originally set by Megan Paggi). The team won the 2010 Luther Knight Christmas Classic, with Seniors Jessie Kish and Leslie Klinski named to the All-Tournament team.



In WIAA action, Luther opened with a solid win over New Lisbon (51-37). The Lady Knights played a solid regional championship game the next day, forcing Westby (ranked #6 in state) to overtime for the second time this season. The Knights couldn’t hold on, however, and fell 56-49, finishing the season at 15-9 overall (8-4 conference).

Jessie Kish and Leslie Klinski were both selected to participate in the 2011 WBCA Division 4 All Star game to be held in Madison this summer.

The JV team finished its season with a 13-6 (overall) and 7-4 (conference) record. The C-Team completed its year at 12-8 (overall) and 3-1 (conference).

(Note: All-Conference Selections for basketball were made after printing deadline.)

MUSICALnotes

by Jim Rupprecht - Music Chairman

The WELS National Band Festival 2011 was held in Phoenix, Arizona at Arizona Lutheran Academy on March 9 through the 13 with a concert at ALA at 2:30 March 13. Band members left on March 9 for Arizona and traveled to the Grand Canyon on March 10. Rehearsals ran March 11 and 12 with a Saturday afternoon Brewers-Diamondbacks spring training baseball game. This year's clinician was William Humbert from Glendale Community College. The following students were selected to participate: Amanda Bell (Grace, La Crosse) - clarinet, Kaity Lepke (St. John's, Sparta) - clarinet, Sheridan Burmeister (St. Michael's, Fountain City) - trumpet, Olivia Krause (Christ Lutheran, Cochrane) - percussion, Joel Schomberg (St. Matthew's, Winona) - tuba, and Annika Henckel (English Lutheran, Viroqua) - tuba.

The Luther High School Handbell Choir will participate in the WELS National Handbell Festival on April 9 and 10. A sacred concert will be performed on Sunday, April 10 at Wisconsin Lutheran College in Milwaukee, WI. Everyone is welcome.

The Luther High School Music Department will present a Sacred Lenten Concert on April 19 at 7:00 p.m. The theme for this year's concert is "His Robes for Mine". The Concert Choir, Cantate Choir, Sound Foundation and Handbells will perform. Please join us as we follow our Savior to the cross and to His resurrection on Easter Sunday.

Luther High School Concert Band and the grade school Lancer and Sabre Bands will have a joint concert on April 3 at 2:00 p.m. in the ACE gymnasium. All types of music will be performed plus the band's contest selections for this year. Following the concert both the grade school and high school Jazz Bands will perform. Refreshments will be served. Everyone is welcome.

Knight Revue 2011 will be held on May 14 at 7:00 p.m. Music will range in style from Pop to Jazz to Country. A silent auction will be held to benefit the Music Department. Anyone wishing to contribute items to the silent auction should contact Paul Adickes at 608-783-5435 x428 or adicpaul@luther.k12.wi.us. Doors will open at 6:30 p.m. Snacks and beverages will be served throughout the concert. Tickets are not required for this event.

Luther High School's Spring Spotlight is scheduled for May 15 at 2:00 p.m. The Music Department will provide entertainment for the event including Luther Band, Jazz Band, Concert Choir, Cantate Choir, Sound Foundation and various soloists from the student body. The Lutheran Elementary School Lancer Band and Lancer Jazz Band will also perform. Please join us!

The Music Awards Banquet will be held on May 18 at 6:00 p.m. This banquet will recognize achievements of the students in the Music Department. The Sound Foundation and Handbells will perform.

dr. rabbe memorial **GOLF OUTING**

by Pastor Sachs - First Lutheran, La Crosse

The seventeenth annual Dr. James Raabe Golf Tournament will be held at Cedar Creek Country Club in Onalaska on Monday, July 11, 2011. If we have your address, we will send a registration form to all who participated in the tournament during the past two years. If you do not receive a registration form, you may obtain one from church@firstlacrosse.org, by calling 608-784-5035 or by writing to Friends of Luther, 400 West Avenue South, La Crosse WI 54601.

This golf outing has been an enjoyable afternoon of Christian fellowship for thousands of friends of Luther over the years. The tournament has also provided nearly \$275,000 of financial support for Luther. Most of the support has been in the form of tuition aid for students. Anyone who has information about potential hole sponsors or prize donors is encouraged to contact Pastor Sachs at the above telephone number, email or address above.

THE WORD OF GOD...

the perfect light for our path

by Pastor Mark Wessel - St. John's, Sparta

“When Jesus spoke again to the people, he said, “I am the light of the world. Whoever follows me will never walk in darkness, but will have the light of life.” John 8:12.

Epiphany is a season of light. Jesus is the light of the world and his light of truth illuminates those who follow him. That light shines in contrast to the darkness of our sinful world that surrounds us.

Recently I attended an orientation session with my son at a state university. I was curious to know what the students hear as they prepare for life on campus. We were barely comfortable in our seats when one of the presenters spoke on diversity and the various groups on campus. Near the top of the list were the letters LGBT-- Lesbian, Gay, Bisexual and Transgender. These letters have now become the mainstream way of designating a subculture in our society that gathers persons who share a commonality in these sexual or gender identities. This university was making it quite clear that this subculture was very welcome on campus and to be respected by all students. Later I learned that this particular state university is making a concerted effort to be very open toward the LGBT community.

All this is nothing new, of course. Students of Luther and perhaps parents too have heard this message for a while already. The message is getting louder and louder, however. The pressure to conform and tolerate sin and sinful lifestyles is growing stronger and stronger. This is the college world into which our high school students are graduating. This is the world that sets up the contrast between light of Christ's truth and the darkness of sinful thinking.

In that auditorium I couldn't help but reflect on the Christian education my son had received most recently

from Luther High and how the message I was hearing was such a contrast to what he had learned. This is one reason why Christ-centered education is critical for our youth—to ground them in Christ's truth so that darkness does not overtake them and they can, in turn, remain followers of the Light and be lights upon our darkened world.

“I'm not speaking merely of living in ways that please God; but above all, knowing their Savior from sin and his forgiving love for them and for all. Our students will fall into sin on college campuses.”

I'm not speaking merely of living in ways that please God; but above all, knowing their Savior from sin and his forgiving love for them and for all. Our students will fall into sin on college campuses. Our students may well lose the struggle at times to shine brightly on campuses due to peer pressure or secular indoctrination. They may even struggle with gender identity issues. We as parents may fail to give them the encouragement and guidance they need, or we ourselves may adopt ideas that reveal the darkness of sinful human reasoning rather than thinking in the light of truth.

Jesus the Light exposes our darkness. “But everything exposed by the light becomes visible, for it is light that makes everything visible,” St. Paul wrote (Eph. 5:14). The light of truth shows our sins and failures for what they are—offensive to God and destructive to our souls.

That same Word lights up the glorious cross where Jesus assumed our guilt and sins and shed his blood to cover them all. That Word shows us the truth how deeply God loves us and delights in us because of His Son. That Word shows us our eternal glory in heaven.

That Word is also a perfect light for our path to guide us, students and parents, on the path of truth. By walking God's way, we can be lights upon the earth as Jesus calls us to be—lights that know and live the truth; lights that expose darkness of sin and lights that draw unbelievers to see the goodness of God, all for his glory!

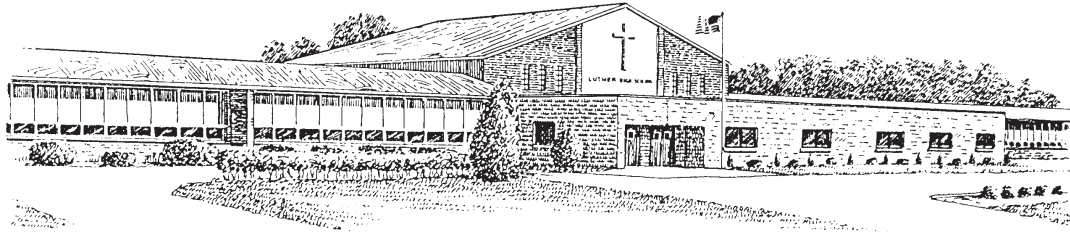
Newsletter for...
Friends Of Luther High School

C/O First Ev. Lutheran Church
400 West Ave. South
La Crosse, WI. 54601

Address Service Requested

Non-Profit Org.
U.S. Postage
PAID
La Crosse, WI.
Permit No. 588

Luther High School 1501 Wilson St., Onalaska, WI 54650



Newsletter published as a program of First Lutheran Church, La Crosse, WI. Email address: fol@luther.k12.wi.us

WISH LIST items

The Big Knight 2011 Presents:
A Knight In The Tropics
A NIGHT TO SUPPORT A KNIGHT
Friday, April 1, 2011
The Radisson Ballroom
6-8 Silent Auction
8 Dinner
9-10 Live Auction
Questions? Contact Mary Bilitz at 608-783-5435 x103 or bilimary@luther.k12.wi.us

Item	Amount Needed	Total Cost
Cordless Drill	1	\$50
Glass Fusing Kiln	1	\$600
Bleachers	2	\$9000
Stage Lights	1	\$3000
GoBo Patterns for Drama	3	\$39
High Resolution Lens	1	\$500
Mechanical Lift	1	\$4000
Music Instrument Repair	2	\$1000